

How-to Secure & Check the Intake Butterfly Screws

Tools needed:

Red loctite

5mm hex key

flathead screwdriver

pliers

10-12-17mm sockets and appropriate drivers and extensions

17mm wrench

patience

1. using 17mm socket and 17mm wrench, remove strut bar. No strut bar? Proceed to step
2. remove upper intake section between MAF and TB.
3. using 5mm hex key, remover throttle body.



picture shows only top two bolts, there are two more underneath.

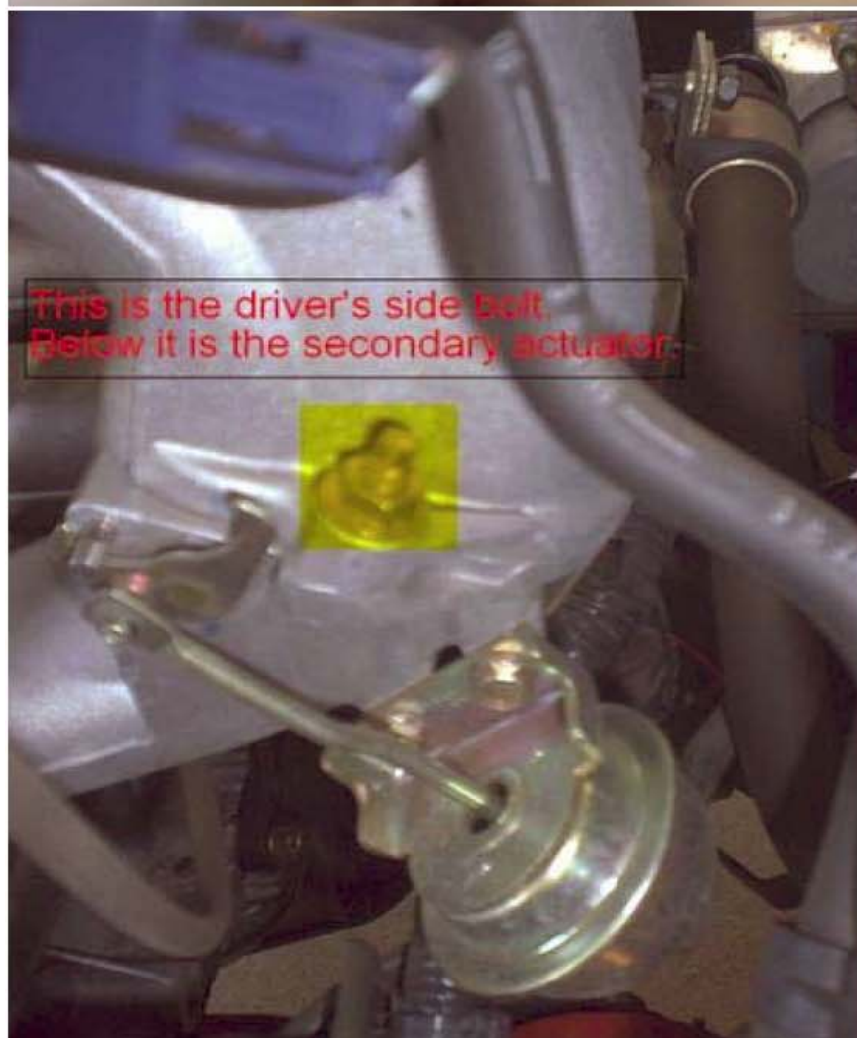
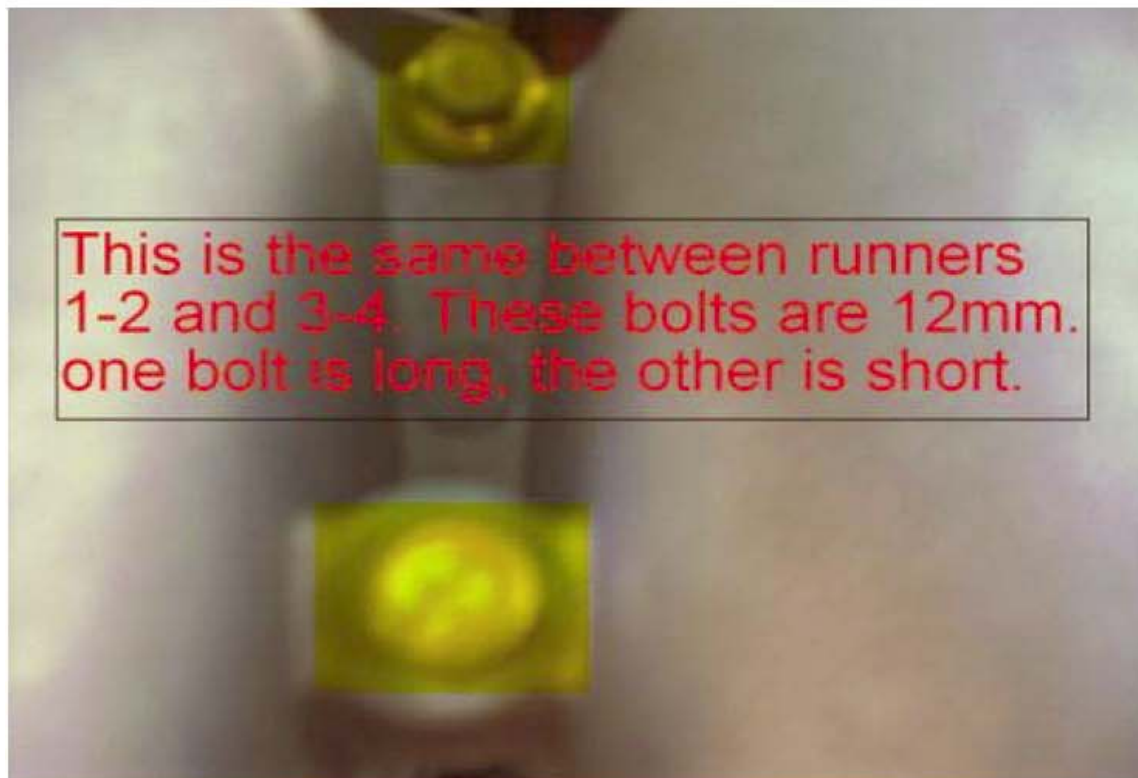
4. using pliers, remove hoses from upper manifold section.



Two are in picture, The other two are next to the throttle body, between the manifold and

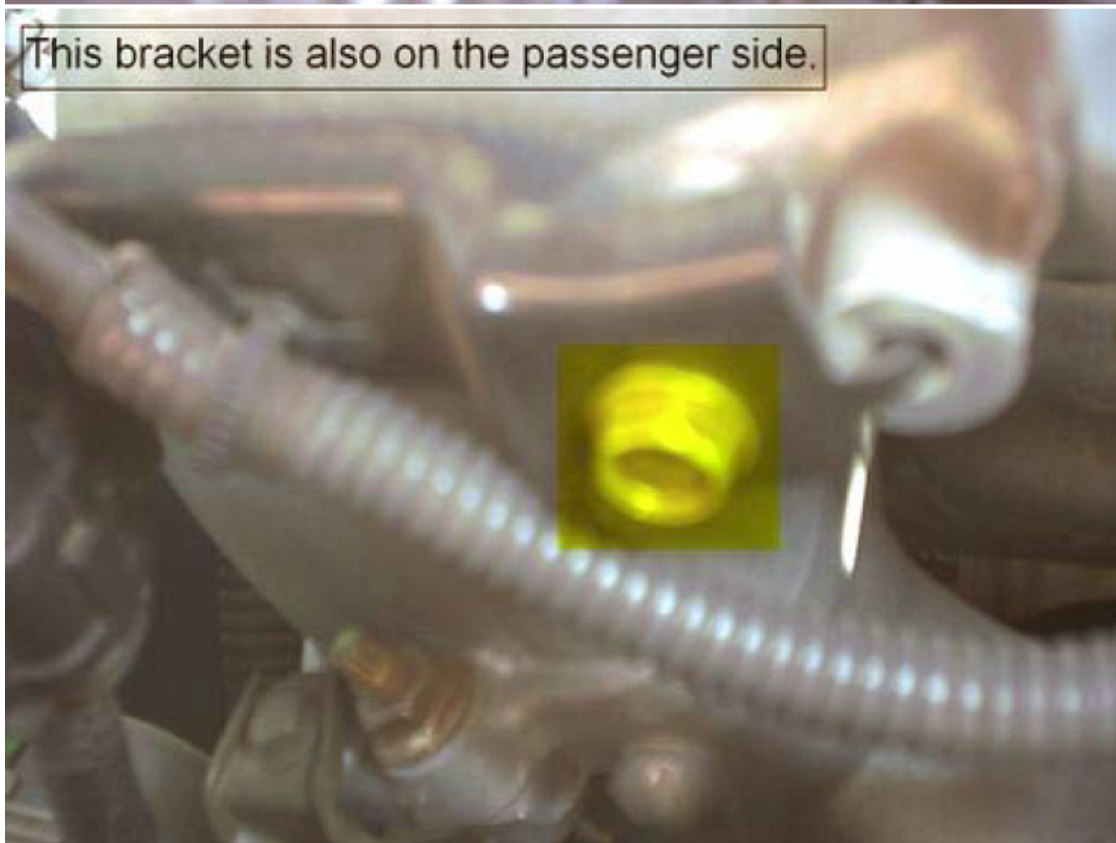
5. using the 10 and 12 mm sockets w/ extensions, remove the bolts seen in these pictures



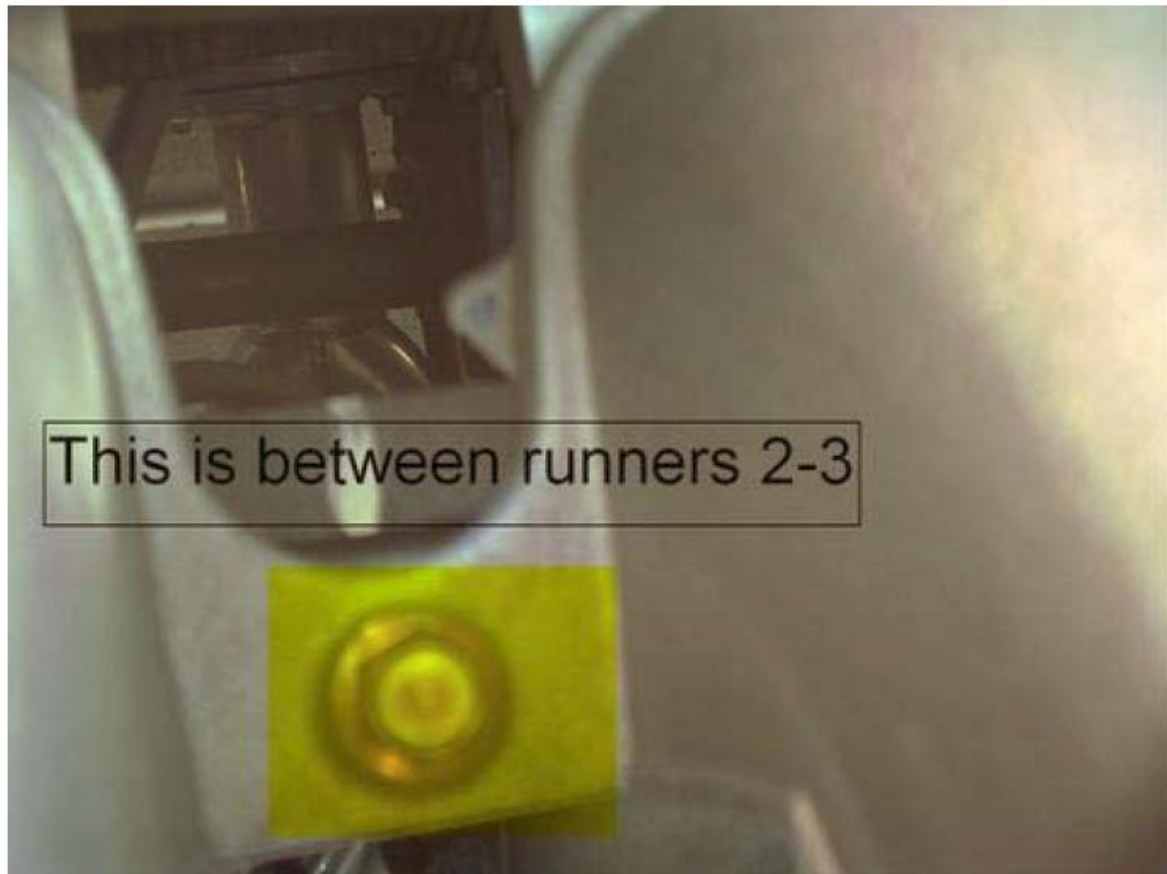




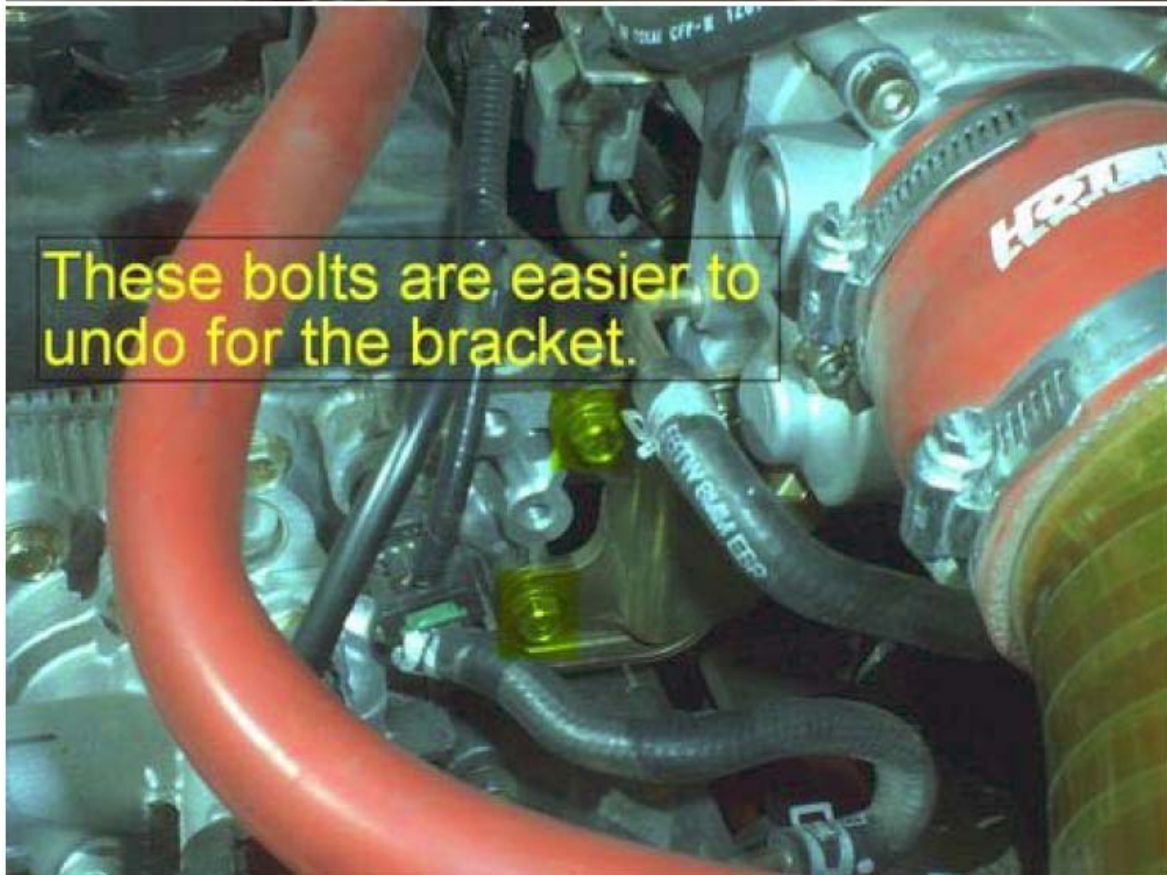
This is the passenger side bolt.
There is also a bracket.



This bracket is also on the passenger side.



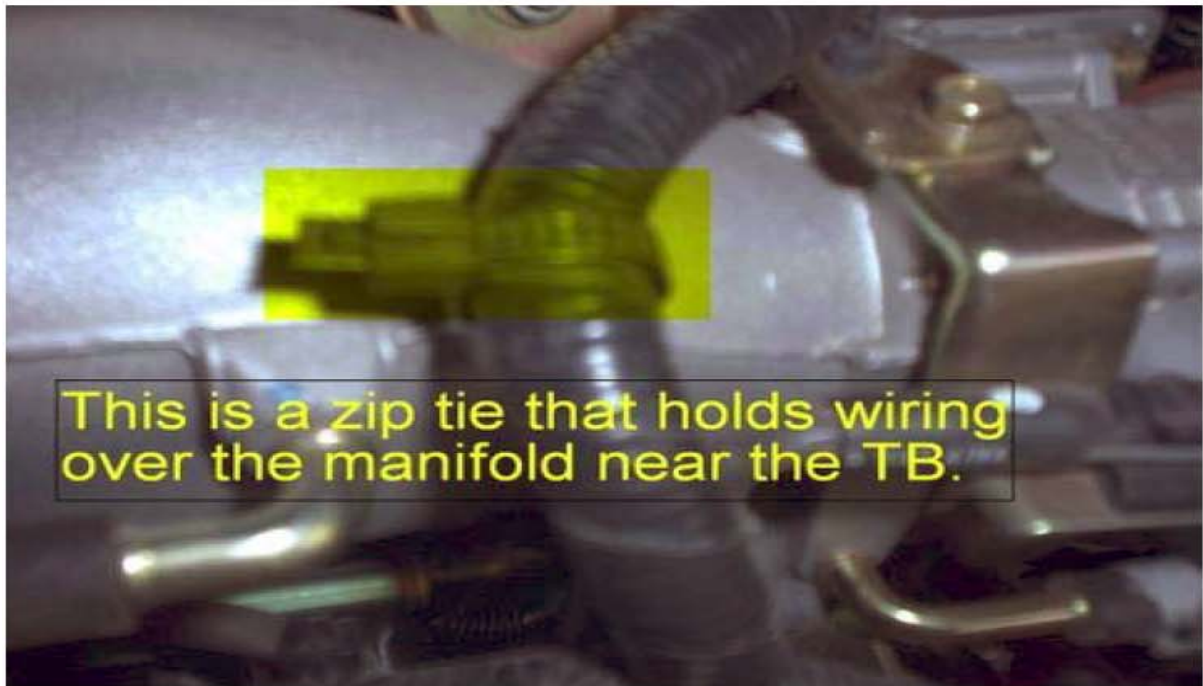
This is between runners 2-3



These bolts are easier to undo for the bracket.



This zip tie can be undone with the flathead.



This is a zip tie that holds wiring over the manifold near the TB.

6. After removing those, the upper manifold should easily remove, leaving you with this...



7. remove gasket and cover the open runners with cloth or something.

8. remove one screw on any butterfly, (I suggest either going driver to passenger side or v use red loctite, and reinstall. Go until all screws have loctite.

9. re-installation of upper manifold is the opposite of removal.